

## (LHD) TOYOTA HIGHLANDER PLATINUM 3.5P AWD MY2021

**VEHICLE CODE:** HSQ

**Mechanical/Performance**

**Year :** 2021

**Make:** TOYOTA

**Engine :** Gasoline engine-3.5-Liter V6 Dual Overhead Cam (DOHC) 24-Valve D-4S Injection Atkinson Cycle-capable Engine with Dual Variable Valve Timing with intelligence (VVT-i) and Stop and Start Engine System (S&S); 4 295 hp @ 6600 rpm, 263 lb.-ft. @ 4700 rpm

**Drive Modes :** Drive mode select with SPORT, Eco, NORMAL and SNOW Modes  
Multi-Terrain Select with MUD & SAND, ROCK & DIRT, and NORMAL modes

**Emission Rating :** Ultra Low Emission Vehicle 70 (ULEV 70)

**Transmission:** Direct Shift-8AT 8-speed Electronically Controlled automatic Transmission

**Drivetrain :** Dynamic Torque Vectoring AWD

**Suspension:** Independent MacPherson strut front suspension with stabilizer bar; trailing-wishbone suspension

**Steering:** Electric Power Steering (EPS); power-assisted rack-and-pinion

**Brakes:** Power-assisted ventilated 13.3-in. front disc brakes; solid 13.3-in. rear disc brakes and Star Safety System™



## **(LHD) TOYOTA HIGHLANDER PLATINUM 3.5P AWD MY2021**

### **Steering**

Turning radius (ft.) : 18.7

Turning circle diameter (ft.): 37.4

### **Exterior dimensions (in.)**

Track (front/rear): 65.3/65.4

Wheelbase: 112.2

Overall length/width: 194.9/76.0

Unloaded height (no antenna): 68.1

### **INTERIOR DIMENSIONS, FRONT/SECOND-ROW/THIRD-ROW SEATS (IN.)**

Head room: 38.4/37.1/36.1

Leg room: 42.0/41.0/27.7

Shoulder room (with shade): 59.0/58.4/55.0

Hip room: 57.2/57.0/45.6

### **Off-Highway**

Approach/departure angle (degrees): 17.9/23

Ground clearance (in.): 8

Ramp breakover angle: 16.7

### **Weights/Capacities**

Cargo volume (cu. ft.) behind front/second-row/third-row seats: 84.3/48.4/16.0

Seating capacity (standard/optional) : 7

Curb weight (lb.) (standard seating config.): 4,450

Gross Vehicle Weight Rating (GVWR) (lb.) (standard seating config.): 5,935

Fuel tank (gal.): 17.9

EPA passenger volume (cu. ft.) with panoramic moonroof, first/second/third row: 136.1

Towing: Trailer-Sway Control (TSC)

### **Towing**

Towing capacity (lb.): 5,000

### **Tires**

Type: Temporary spare tire, All-season radials (P235/55R20)



## **(LHD) TOYOTA HIGHLANDER PLATINUM 3.5P AWD MY2021**

### **EXTERIOR**

- Smart Key System on front doors and liftgate with Push Button Start, remote keyless entry system with lock, unlock, panic and liftgate functions; remote illuminated entry
- Color-keyed heated power outside mirrors with puddle lights with integrated Highlander logo, turn signal, blind spot warning indicators, manual folding, and reverse tilt-down with memory feature
- LED projector headlights with Adaptive Front-Lighting System (AFS), auto leveling and LED-strip Daytime Running Lights (DRL)
- High-output LED fog lights
- LED taillights
- Rain-sensing washer-linked variable intermittent windshield wipers and intermittent rear wiper
- Windshield wiper de-icer
- Rear liftgate windshield defogger
- Rear liftgate windshield washer and backup camera washer
- High Solar Energy-Absorbing (HSEA) glass on front side windows
- Privacy glass on rear side, quarter and liftgate windows
- 20-in. alloy wheels and P235/55R20 tires
- Front grille in black paint and chrome-plated surround with front lower bumper in silver finish
- Rear lower bumper in silver finish
- Color-keyed side rocker panels and lower molding
- Color-keyed outside door handles
- Rear spoiler with LED center high-mount stop light
- A-pillar in black high-gloss film
- Power Panoramic View Moonroof with sunshade and one-touch open/close with jam protection
- Height-adjustable hands-free power liftgate with jam protection
- Roof rails
- Front and rear mudguards
- Rear bumper scuff plate

## (LHD) TOYOTA HIGHLANDER PLATINUM 3.5P AWD MY2021

### INTERIOR

- Power windows with auto up/down in all positions and jam protection
- Three-zone automatic climate control with air filter, separate second-row control panel, individual temperature settings for driver, front passenger and rear-seat passengers, and second- and third-row vents
- Chrome interior door handles
- Power door locks with shift-linked automatic lock/unlock feature
- Soft-touch roll-top center console (15L) with removable utility tray
- Qi-compatible wireless smartphone charging with charge indicator light
- Soft-touch in-dash split-level shelf
- Eight cup holders and four bottle holders
- Dual sun visors with sliding function and illuminated vanity mirrors
- Overhead console with conversation mirror, sunglasses storage and maplights
- Digital rearview mirror with HomeLink universal transceiver
- Leather-trimmed front- and second-row seats; heated and ventilated front seats; 10-way power-adjustable driver's seat including power lumbar support; 4-way power-adjustable front passenger seat; seat memory function
- 7-passenger seating with second-row fold-down captain's chairs and fold-down inboard armrests, adjustable headrests and two cup holders mounted on the floor; and 60/40 split, fold-flat third-row seats with sliding headrests and recline function
- Heated second row
- Second-row sunshades
- Leather-trimmed shift knob and tilt/telescopic leather steering wheel with audio, Multi-Information Display (MID), Bluetooth hands-free phone, voice command, Dynamic Radar Cruise Control (DRCC), Lane Departure Alert (LDA), Lane Steering Assist (LSA) and multimedia information controls
- Heated steering wheel
- 7-in. color LCD Multi-Information Display (MID) in meter cluster with odometer, current/average fuel economy, cruising range, average speed, AWD torque distribution (AWD models only), cruise control guide, audio status, hands-free incoming call notices, telephone information, ECO Driving Indicator, and energy monitor (HV models only)

## **(LHD) TOYOTA HIGHLANDER PLATINUM 3.5P AWD MY2021**

- 10-in. color Head-Up Display (HUD) with speedometer and Road Sign Assist (RSA), navigation and Hybrid System Indicator (hybrid models only)
- Bird's Eye View Camera with dynamic gridlines—includes Perimeter Scan, 360-Degree Overhead View in low-speed drive and reverse, and Curb View
- Five USB ports and two 12V outlets
- One 120V outlet (100W) located on the bottom rear of the center console
- Ambient interior lighting
- Front- and second-row-seat reading lights
- Ornamental dash trim and faux wood door trim
- Six tie-down cargo hooks
- Cargo area tonneau cover
- Illuminated front doorsill metal scuff plate
- Digital clock
- Driver Easy Speak—utilizes microphone in overhead console to amplify the driver's voice and broadcast it through rear speakers

### **AUDIO MULTIMEDIA**

Premium Audio, with Dynamic Navigation with 3-year trial —includes 12.3-in. touchscreen, 11 JBL® speakers including subwoofer and amplifier, USB media port, four USB charge ports, hands-free phone capability and music streaming via Bluetooth® wireless technology, Android Auto™ & Apple CarPlay® & Amazon Alexa compatible, SiriusXM® with 3-month All Access trial subscription. See [toyota.com/audio-multimedia](http://toyota.com/audio-multimedia) for details. Connected Services—Safety Connect® with 1-year trial, Service Connect with 10-year trial, Remote Connect with 1-year trial, Wi-Fi Connect with up to 2 GB within 3-month trial, Destination Assist with 1-year trial. See [toyota.com/connected-services](http://toyota.com/connected-services) for details.



## (LHD) TOYOTA HIGHLANDER PLATINUM 3.5P AWD MY2021

### SAFETY/CONVENIENCE

- Toyota Safety Sense™ 2.5+ (TSS 2.5+)
- Star Safety System™—includes Enhanced Vehicle Stability Control (VSC), Traction Control (TRAC), Anti-lock Brake System (ABS), Electronic Brake-force Distribution (EBD), Brake Assist (BA) and Smart Stop Technology® (SST)
- Eight airbags (driver airbag, front passenger airbag, knee airbag (driver), seat cushion airbag (passenger), front side airbags, curtain shield airbags)
- Safety Connect® — includes Emergency Assistance, Stolen Vehicle Locator, Roadside Assistance and Automatic Collision Notification. Available by subscription. Complimentary one-year trial subscription.
- 3-point seatbelts for all seating positions; driver's-side Emergency Locking Retractor (ELR) and Automatic/Emergency Locking Retractor (ALR/ELR) on all passenger seatbelts
- LATCH (Lower Anchors and Tethers for CHildren) includes lower anchors and tethers on outboard second-row seats and tether anchor on middle of second- and third-row seats
- Child-protector rear door locks
- Driver and front passenger seatbelt warning
- Rear passenger seatbelt reminder
- Rear-seat reminder
- Adjustable front seatbelt shoulder anchors and driver and front passenger seatbelt pretensioners with force limiters
- Downhill Assist Control (DAC)
- Engine immobilizer
- Engine immobilizer alarm
- Tire Pressure Monitor System (TPMS) (individual tires)
- Snow Mode + Drive Mode Select (ECO, Normal, Sport) + Multi-Terrain Select (Mud/Sand, Rock/Dirt, Normal)
- Hill Start Assist Control (HAC)
- Front and Rear Parking Assist with Automatic Braking (PA w/AB)
- Dynamic Torque Vectoring AWD with Driveline Disconnect; Multi-Terrain Select with dial
- Front and Rear Parking Assist with Automatic Braking (PA w/AB)<sup>54</sup>



## (LHD) TOYOTA HIGHLANDER PLATINUM 3.5P AWD MY2021



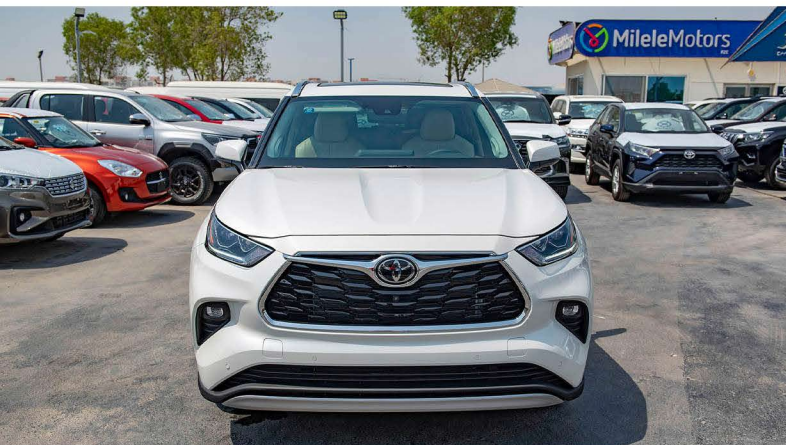


## (LHD) TOYOTA HIGHLANDER PLATINUM 3.5P AWD MY2021



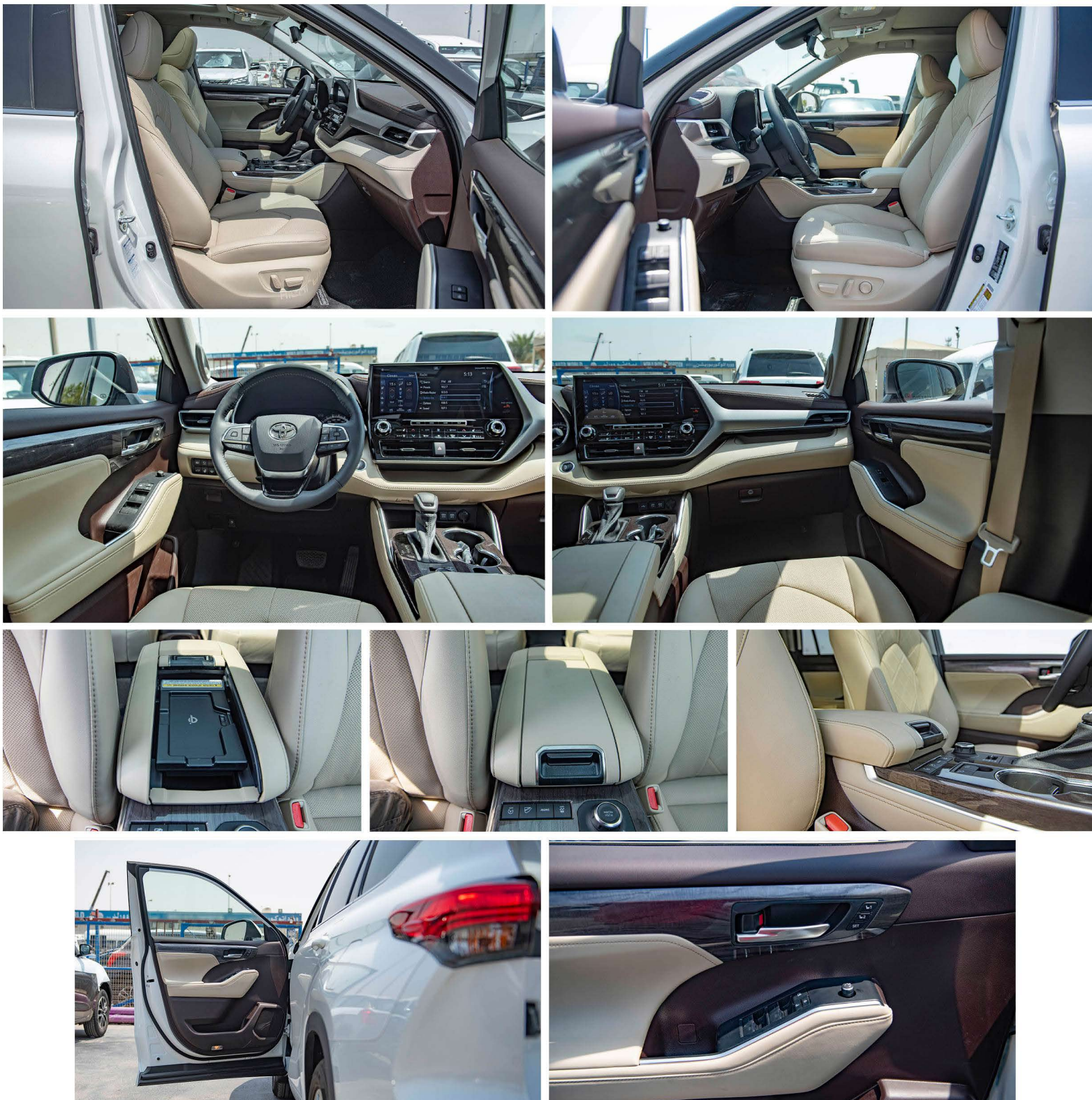


## (LHD) TOYOTA HIGHLANDER PLATINUM 3.5P AWD MY2021



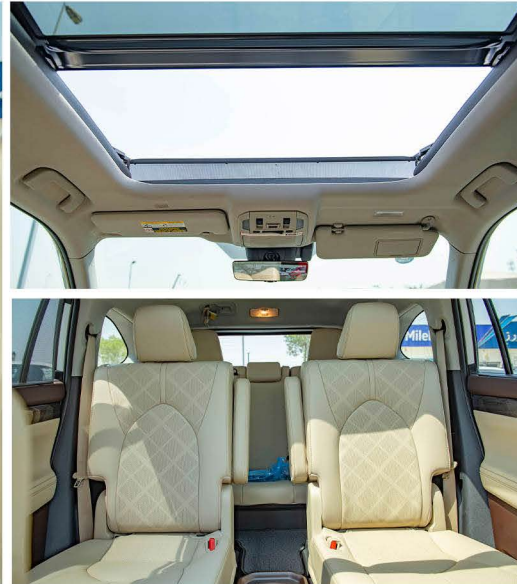


## (LHD) TOYOTA HIGHLANDER PLATINUM 3.5P AWD MY2021





## (LHD) TOYOTA HIGHLANDER PLATINUM 3.5P AWD MY2021





## (LHD) TOYOTA HIGHLANDER PLATINUM 3.5P AWD MY2021

