

(LHD) MERCEDES-BENZ S450 SEDAN 3.0P AT 4MATIC MY2023 - OBISIDIAN BLACK

VEHICLE CODE: SCLASS3.0P_5

TECHNICAL FEATURES

Displacement:	2,999CC
Cylinders:	6
Power:	367bhp
Torque:	500Nm
Compression Ratio:	10.5:1
Drive Train:	Rear Wheel Drive
Transmission:	Automatic
Euro Emissions:	6
Fuel:	Petrol
Fuel Tank Capacity:	76L

Wheels & Rims

Front:	275/40R19
Rear:	275/40R19



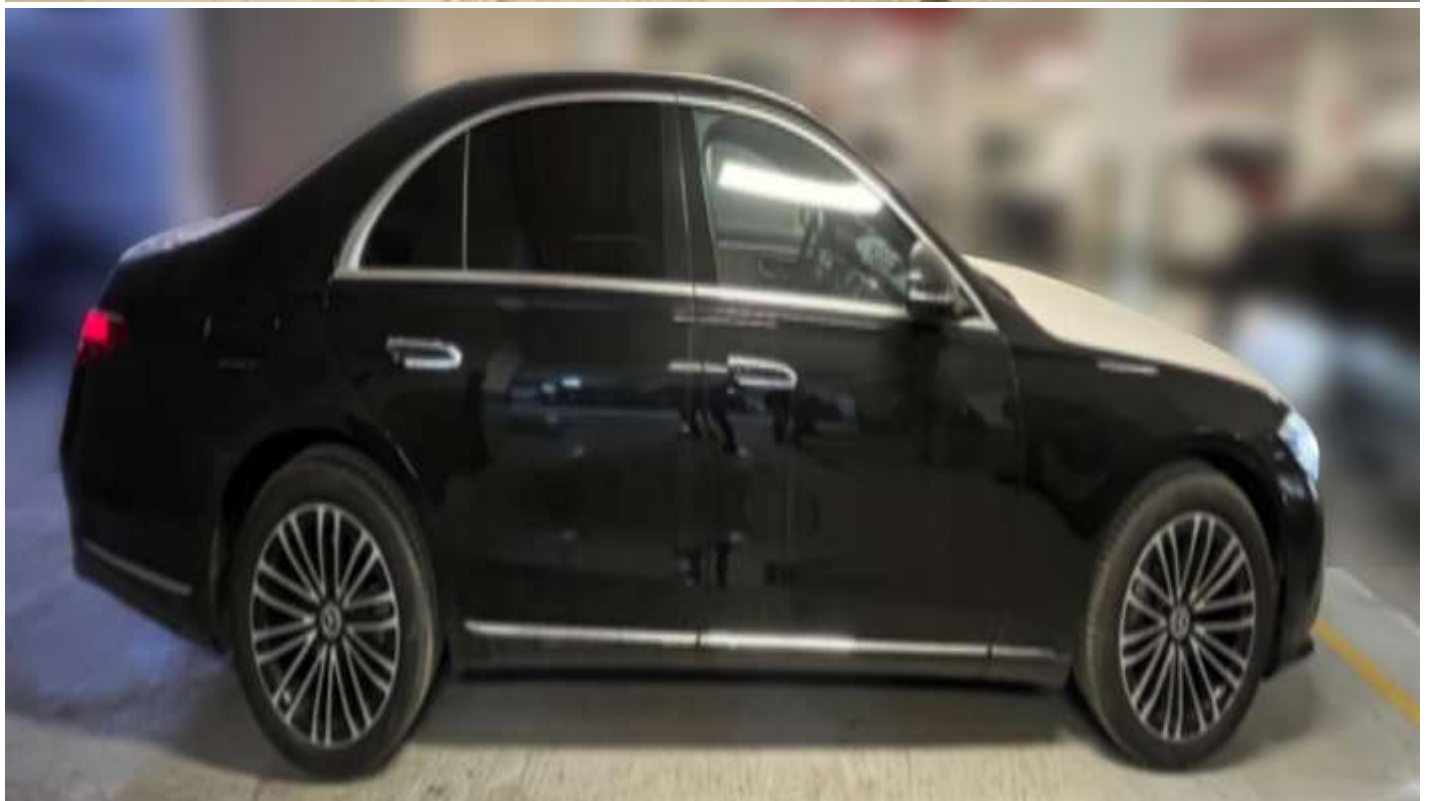
Dimensions & Weight

Height:	1503 mm
Width:	1921 mm
Length:	5290 mm
Wheelbase:	3216 mm
Weight:	1915 kg
Turning circle:	12.80 m
Ground clearance unladen:	130 mm

Standard features

Owner's Manual and service information - English
Smartphone integration
48.3-cm (19-inch) multi-twin-spoke light-alloy wheels
Apple CarPlay
Android Auto
Rear axle steering
Active Lane Keeping Assist
Through-loading feature
PRE-SAFE® Impulse Side
Ashtray inserts at front and rear in the stowage compartments.
DIGITAL LIGHT with projection function
Sound personalisation.
Extended MBUX functions
Climatised front seats
Panoramic sliding sunroof
9G-TRONIC
3D driver's display
Tyre pressure loss warning system
Under guard
AIRMATIC
Roof liner in black fabric
MBUX multimedia system
THERMOTRONIC automatic climate control
Ambient lighting with projection of brand logo
Adaptive High beam Assist Plus
Freight packaging without tie-down hooks
Centre console in a black crystal-look finish
USB Package Plus
Burmester® 3D surround sound system
Control code for Sales.
Heat-insulating dark-tinted glass.
OLED central display
HANDS-FREE ACCESS
Heated rear seats
Active ambient lighting

Active ambient lighting
Remote boot lid closing
Power closing
Independent boot locking
Ambient lighting
Wireless charging system for mobile devices in the front
Seat heating Plus for driver and front passenger seats
Fuel tank with a capacity of 76 litres.
EU6 emissions standard
Integrated Starter Generator Generation 1
Load Compartment package.
Identification label under windshield
Mild Hybrid Antriea
Tyre-change toolkit
Rear loading sill protection in stainless steel
TIREFIT
High-gloss black poplar wood trim
Multifunction steering wheel in Nappa leather
Driving Assistance Package
Active Distance Assist DISTRONIC
Memory Package
interior mirror and driver's exterior mirror automatically dimming.
Electrically adjustable driver's seat and front passenger seat with memory function
Fingerprint scanner.
4-way lumbar support
MBUX Navigation Plus
Hard-disc navigation
PWS Standard equipment package
KEYLESS-GO with flush-fitting door handles.
Parking Package with 360-degree camera
Active Parking Assist with PARKTRONIC
360° camera
Illuminated door sill panels with "Mercedes-Benz" lettering.
Summer tyres
Automatic front passenger airbag deactivation
Velour floor mats
Socket







Milele
Automotive, Mobility, and Beyond

Ras Al Khor3, Dubai - UAE

P.O Box 6339

+971504996459

info@milele.com

www.milele.com



www.milele.com

