



## (LHD) Ford Ranger Raptor 2.0L Diesel



### Technical Specification

Body Type	:	Pickup
Brand	:	Ford
Model	:	Ranger Raptor
Year	:	2020
No. of Passengers	:	5 Seater
Dimensions (L x W x H)	:	(5,354 X 2,163 X 1,851)mm
Fuel	:	Diesel
Fuel Capacity	:	80 L
Horsepower/BHP	:	118 hp
Engine Capacity	:	2.0L
Cylinder No.	:	4
Brakes	:	Front & Rear Disc Brakes
Head Lamp	:	LED Head lamps with DRL
Gross Weight	:	3,220 kg
Ground Clearance	:	237mm
Wheel Base	:	3,220 mm
Transmission	:	6 Speed Manual
Tyre Size	:	285/70 R17"
Suspensions	:	Electronic Locking Rear Differential

### Interior & Convenience

- ◇ Smart Entry / Push Start
- ◇ Power Window / Mirrors
- ◇ Electric Power Steering /Media + Phone Control
- ◇ Leather Steering Wheel / Puddle Shift
- ◇ Electronic automatic rear Differential lock
- ◇ 6 Different Driving Modes / Cruise Control
- ◇ Hill Start Assist, Down Hill Start
- ◇ Audio ( Navigation, AM, FM, DAB, Radio, USB, CD Player, 8" Touch Screen) with 6 Speakers
- ◇ Dual TFT 4.2" instrument panel display
- ◇ Stable Function Trailer / Traction Control
- ◇ Automatic dual-zone air conditioning
- ◇ Driver and front passenger airbags
- ◇ 12V power point: front & rear console
- ◇ Interior rearview mirror with auto dimming
- ◇ Electrically operated, folding and heated exterior mirrors - boarding area lighting,
- ◇ Darker tinting of the rear windows
- ◇ Heated windshield and rear window
- ◇ ESP , ABS
- ◇ Leather gear lever head and parking brake
- ◇ Driver's seat electrically adjustable in 10 directions, with lumbar support Triple seat in the 2nd row with a central armrest
- ◇ 230 V / 150 W socket in the driver's cab 12 V socket at the back
- ◇ Partially leather seat upholstery including Raptor logo on the front, Ebony color, Soho Grain pattern central armrest with double bottom
- ◇ Front and rear velor mats, with Raptor logo on the front

 /MileleMotors

 @MileleMotors

 MileleMotors

 @MileleMotors



**MileleMotors**  
Procuring, Sourcing, & Stocking Motor Vehicles.



**(LHD) Ford Ranger Raptor 2.0L Diesel**

**Head office**

P.O.Box : 6339

AF - 07, Block A, Samari Retail

Ras Al Khor 3, Dubai - UAE

Tel: +971 50 4996459

Mail: info@milelemotors.com

## Exterior Specification

- ◇ LED Head Lamps / Fog Lamps / DRL
- ◇ Raptor radiator grille
- ◇ Anthracite door handles
- ◇ Rear bumper with step in anthracite shade - 90 ° opening of the rear cover Towing device fixed, including 13-pin socket
- ◇ Side boarding step left and right - anthracite with a grainy finish
- ◇ Raptor sticker on the sides of the cargo space body
- ◇ Stickers on the sides of the body and the rear lid of the cargo space
- ◇ Aerodynamic protective frame behind the cab
- ◇ Fox Pro sports shock absorbers
- ◇ Front and rear dirt traps
- ◇ Protection under the engine and transmission
- ◇ Dyno Gray alloy wheels, 8.5x17 "- BF Goodrich 285/70 R17 All-terrain tires, aluminum spare wheel  
Wheel lock nuts / Spare wheel lock
- ◇ Rear parking camera and rear parking sensors
- ◇ Wading capacity up to 85 cm thanks to "integrated snorkel",
- ◇ Dark ceiling upholstery



## (LHD) Ford Ranger Raptor 2.0L Diesel

### Exterior









## (LHD) Ford Ranger Raptor 2.0L Diesel

### Exterior



-  /MileleMotors
-  @MileleMotors
-  MileleMotors
-  @MileleMotors



**MileleMotors**  
Procuring, Sourcing, & Stocking Motor Vehicles.

**Head office**  
P.O.Box : 6339  
AF - 07, Block A, Samari Retail  
Ras Al Khor 3, Dubai - UAE  
Tel: +971 50 4996459  
Mail: info@milelemotors.com



**(LHD) Ford Ranger Raptor 2.0L Diesel**

## Exterior







## (LHD) Ford Ranger Raptor 2.0L Diesel

### Exterior







**(LHD) Ford Ranger Raptor 2.0L Diesel**

**Interior**

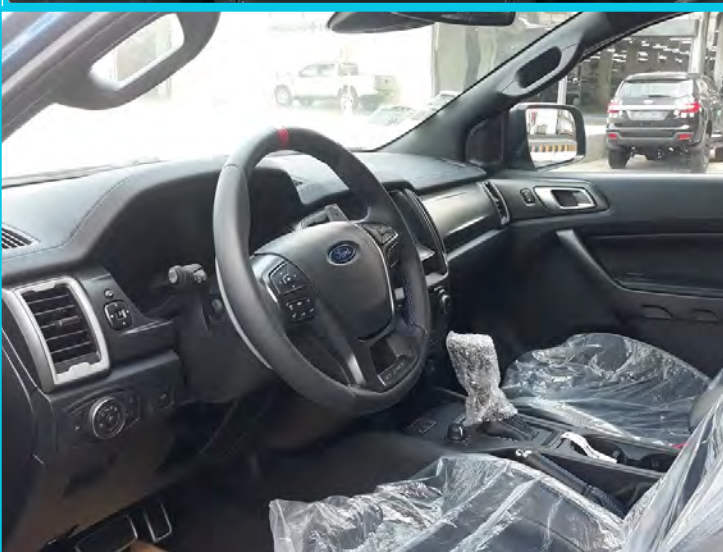
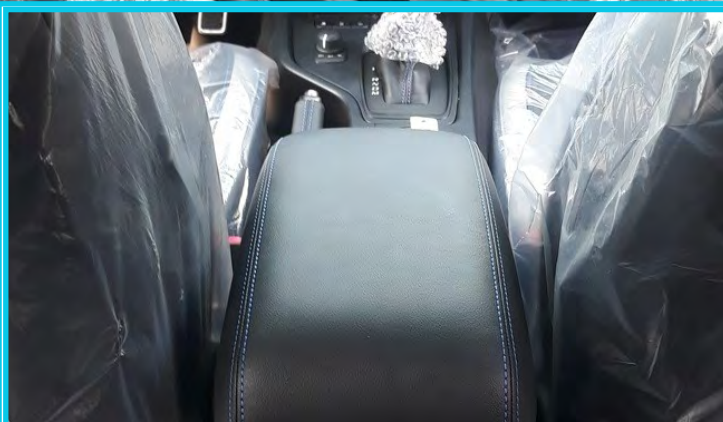






## (LHD) Ford Ranger Raptor 2.0L Diesel

### Interior

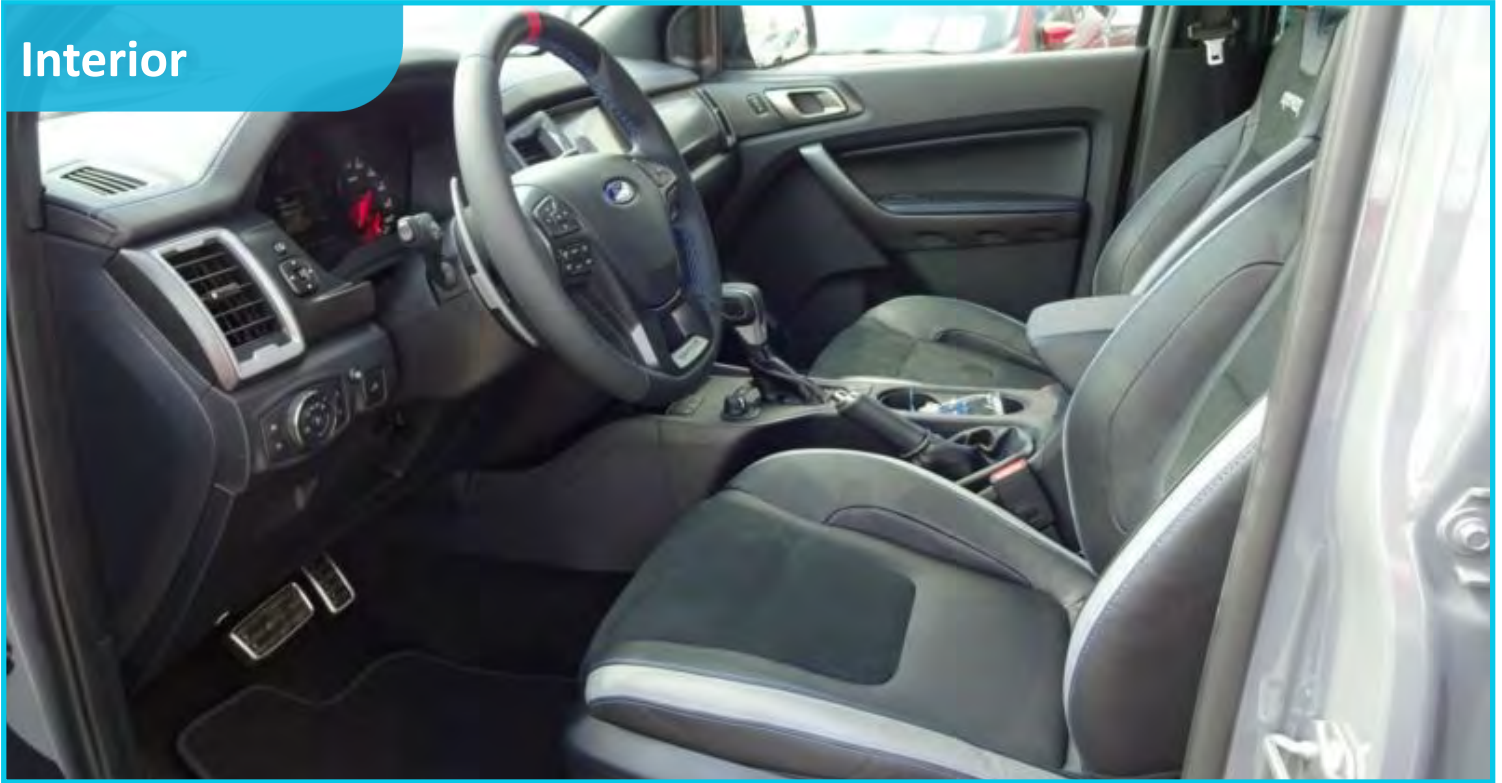






**(LHD) Ford Ranger Raptor 2.0L Diesel**

**Interior**





**(LHD) Ford Ranger Raptor 2.0L Diesel**

**Interior**

