

 /MileleMotors

 @MileleMotors

 MileleMotors

 @MileleMotors



MileleMotors

Procuring, Sourcing, & Stocking Motor Vehicles.

Head office

P.O.Box : 6339

AF - 07, Block A, Samari Retail

Ras Al Khor 3, Dubai - UAE

Tel: +971 50 4996459

Mail: info@milelemotors.com

(LHD) Isuzu NPR 71 Chassis without Turbo MY2021 WITH AC

VEHICLE CODE: NPR714.6D_1

GVW 6500 Kg

Wide cabin / Tilt cabin

Heavy Duty Chassis

Chassis Length : 4.3 meter / width 2.1

4570 cc direct injection Diesel engine with 121 HP at 3200 rpm and 304Nm (31 Kg-m) of Torque at 1600 rpm

Final Gear Ratio 6.142

Engine oil cooler and dual Fuel Filter

High altitude Fuel compensator

Fuel Tank capacity 100L

Power steering

Tires Steel Belted: 7.50R-16-12 (ply) with dual rear wheels

Brakes : Hydraulic dual circuit with Exhaust Brake

Suspension : semi – elliptical alloy steel leaf springs , hydraulic double acting telescopic shock absorbers

Heater and defroster

Tachometer

Power Windows & Power door locks

Reverse warning buzzer

3 point seat belts

Option PTO

Option AC

DIMENSIONS

Overall Length: 5985 mm

Overall Width: 2120 mm

Overall Height: 2270 mm

Wheelbase: 3365 mm

-  /MileleMotors
-  @MileleMotors
-  MileleMotors
-  @MileleMotors

(LHD) Isuzu NPR 71 Chassis without Turbo MY2021 WITH AC



 /MileleMotors

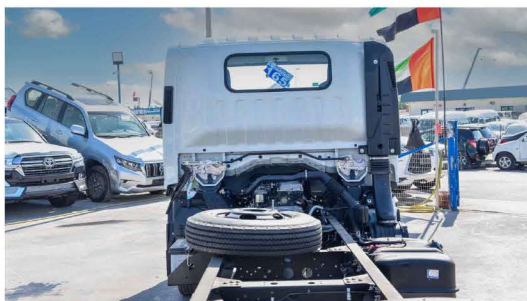
 @MileleMotors

 MileleMotors

 @MileleMotors

Head office
P.O.Box : 6339
AF - 07, Block A, Samari Retail
Ras Al Khor 3, Dubai - UAE
Tel: +971 50 4996459
Mail: info@milelemotors.com

(LHD) Isuzu NPR 71 Chassis without Turbo MY2021 WITH AC



-  /MileleMotors
-  @MileleMotors
-  MileleMotors
-  @MileleMotors

(LHD) Isuzu NPR 71 Chassis without Turbo MY2021 WITH AC



 /MileleMotors

 @MileleMotors

 MileleMotors

 @MileleMotors



MileleMotors
Procuring, Sourcing, & Stocking Motor Vehicles.

Head office

P.O.Box : 6339

AF - 07, Block A, Samari Retail

Ras Al Khor 3, Dubai - UAE

Tel: +971 50 4996459

Mail: info@milelemotors.com

(LHD) Isuzu NPR 71 Chassis without Turbo MY2021 WITH AC

