

## **(LHD) Mercedes Benz GLE 53 4MATIC+ MY2021**

Upholstery Fabric/imitation leather/microfiber - black/anthracite (651A)

### **Equipment**

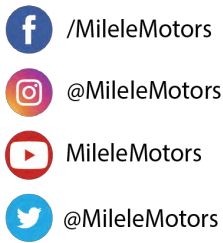
- 651 651 - Fabric/Imitation Leather/Microfiber - Black/Anthracite
- 01U MB Connect Services for Navigation
- 04V Speed/Load Index 110Y+115Y XL
- 08U Mercedes-Benz Connect - Services for Vehicle Setup (HERMES)
- 09U Mercedes-Benz Connect - Vehicle Monitoring (HERMES)
- 14U Smartphone Integration Package
- 16U Apple Carplay Smartphone Integration
- 17U Android Auto Smartphone Integration
- 1B4 Communication Module,
- 215 Adaptive Damping System PLUS (ADS+)
- 22P Lane Tracking Package
- 232 Garage Door Opener with Frequency 284-390 MHz
- 234 Blind Spot Assist
- 235 Active Parking Assist
- 242 Right Electric Adjustable Driver's Seat with Memory
- 243 Active Lane Keeping Assist (Camera)
- 249 Automatic Dimming Inside Rear view Mirror And Outside Mirrors
- 251B Digital Service Booklet
- 258 Collision Warning System with Active Brake Application FCW-Stop
- 26U Mercedes-Benz Connect - Remote Engine Start (HERMES)
- 270 Aerial For GPS
- 273 Exit Warning Assistant
- 275 Memory Package (Driver's Seat, Steering Column and Mirror)
- 293 Sidebag In Rear Left and Right
- 294 Kneebag
- 311 Temperature-Controlled Cup Holder
- 351 ECall Emergency Call System
- 355 Preinstallation For Retrofitting Navigation System
- 362 HERMES Communications Module LTE
- 365 Hard Drive Navigation
- 367 Live Traffic Capability
- 3U7 HU Country Set for North America
- 413 Panoramic Sliding Sunroof/Glass Roof
- 421 9-Speed Automatic Transmission
- 463 Head-Up Display
- 475 Tire Pressure Monitor (TPM)
- 489 AIRMATIC Dual Control/Semi-Active Air Suspension



**Head office**  
P.O.Box : 6339  
AF - 07, Block A, Samari Retail  
Ras Al Khor 3, Dubai - UAE  
Tel: +971 50 4996459  
Mail: info@milelemotors.com

## **(LHD) Mercedes Benz GLE 53 4MATIC+ MY2021**

- 500 Electrically Folding Exterior Mirrors
- 501 360° Camera
- 513 Road Sign Recognition System
- 517 Digital Radio Standard, HD (High-Definition)
- 518 Universal Communications Interface (UCI)
- 51U Headliner, Black Fabric
- 548 MBUX Multimedia System
- 551 Standard Anti-Theft Alarm System (ATA)
- 581 THERMOTRONIC Automatic Climate Control
- 587 Logo Projection Via Mirror
- 608 Automatic High Beam Control (IHC)
- 632 Partial-LED Headlamps
- 650A Fabric/Imitation Leather/Microfiber
- 651A Fabric/Imitation Leather/Microfiber - Black/Anthracite
- 668 Prod. Prot. F. Freight Pkging With Tie-Down Hooks
- 669 Spare Wheel / Folding Wheel
- 72B USB Package
- 763 Radio Remote Control With Panic Switch (315 MHz)
- 772 AMG Styling - Front Spoiler, Side Skirts
- 7B2 Wheel Arch Expansion (CLADDING) Size L
- 810 Premium Sound System
- 840 Glas Dunkel Getönt
- 846 Running Board in Aluminium Look With Rubber Naps
- 868 Central Display High (From 11.5-Inch)
- 871 Sensor System for Trunk Lid Opening/Closing
- 876 Interior Light Package
- 882 Sensor System and Siren for Anti-Theft Alarm System
- 889 Keyless Go
- 890 Automatic Rear-End Door
- 897 Front Wireless Telephone Charging
- 8U6 Assistance System Steering Wheel Control Changeover
- 901 Interior Chrome Package
- 915 Fuel Tank with Increased Capacity - Volume2
- 927 Exhaust Treatment, Euro 6 Technology
- 93B Integrated Starter Alternator Gen. 1.
- 9U5 Control Code, Wheel Diameter, Medium (Size 790)
- AA6 POWER VARIANT UPRATED 1
- B01 48V Technology
- B12 Tyre-Change Tool Kit
- B16 Tailpipe Trim
- F167 Model Series 167






**Head office**  
P.O.Box : 6339  
AF - 07, Block A, Samari Retail  
Ras Al Khor 3, Dubai - UAE  
Tel: +971 50 4996459  
Mail: info@milelemotors.com

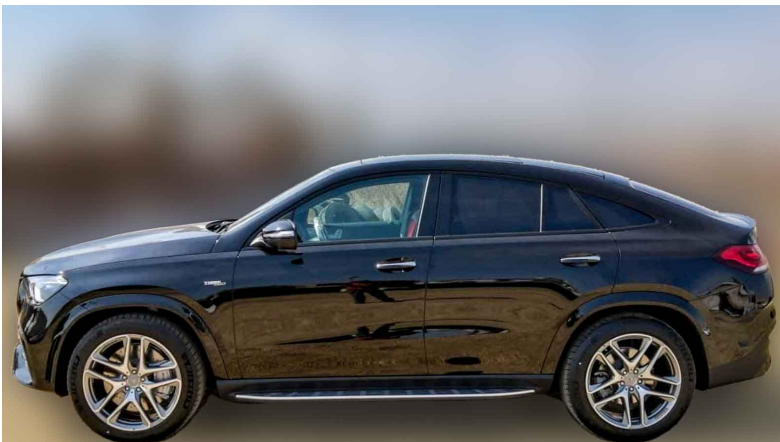
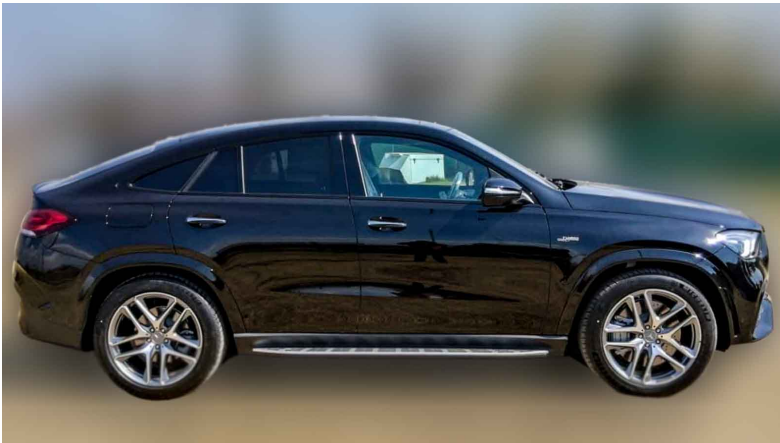
## (LHD) Mercedes Benz GLE 53 4MATIC+ MY2021





- FC Coupe
- GA Automatic Transmission
- H31 Trim Elements - Gray Open-Grained Oak Wood (2B35)
- HA Rear Axle
- K14 Control Code for Service Interval 20000 Km
- K27 Software Control for Unpowered In Position "D"
- L6K Nappa Leather/Microfiber AMG Steering Wheel
- M016 Uprated Engine
- M256 Inline 6-Cylinder Spark-Ignition Engine, M256
- M30 Displacement 3.0 Litre
- P17 KEYLESS-GO Package
- P47 Parking Package High
- P49 MIRROR PACKAGE
- P54 Anti-Theft Protection Package with Preinstallation For Collision Detection
- P60 AMG Exterior Night Package
- P64 Front Memory Package
- PZV Control Code for Sales
- R01 Summer Tyres
- RWD AMG Double-Spoke Wheels 21" Mixed Tires
- U09 Instrument Panel And Beltline Leather-Clad (Embossed Imitation Leather)
- U10 Front Passenger Seat with Weight Sensor
- U22 Lumbar Support Adjustment
- U25 Illuminated Door Sill
- U26 Floor Mats - AMG
- U47 Spoiler Lip
- U88 AMG Steering Wheel Buttons (AMG DRIVE UNIT)
- VL Left Front Axle Half
- VR Right Front Axle Half
- Y05 Seat Belt in Red



-  /MileleMotors
-  @MileleMotors
-  MileleMotors
-  @MileleMotors

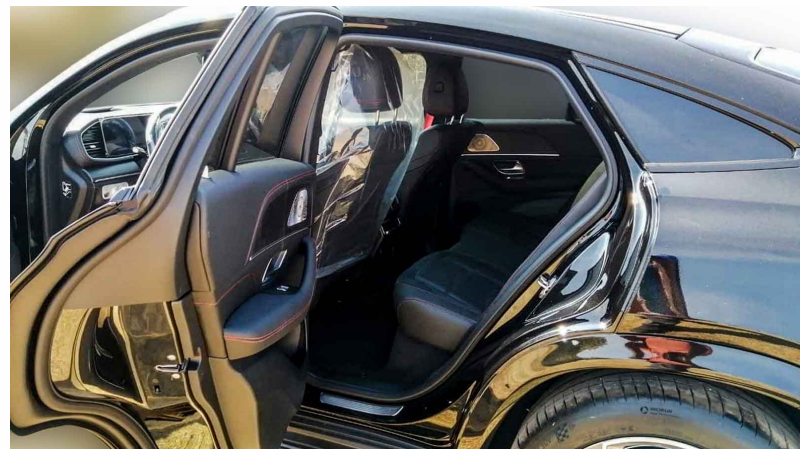
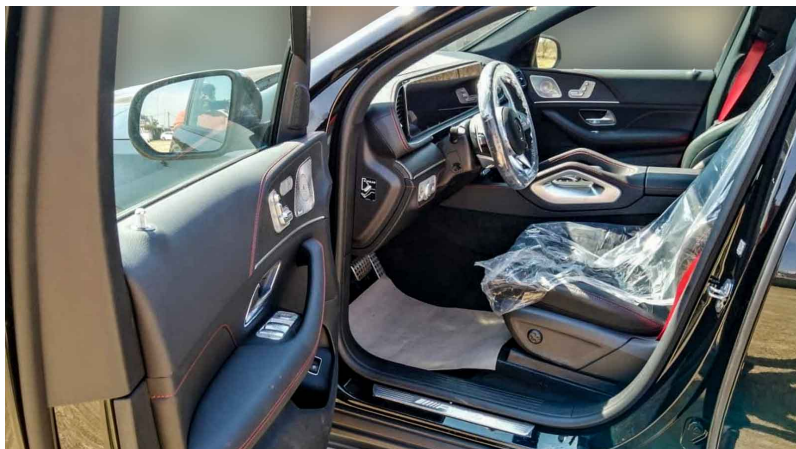
## (LHD) Mercedes Benz GLE 53 4MATIC+ MY2021 BLACK







-  /MileleMotors
-  @MileleMotors
-  MileleMotors
-  @MileleMotors

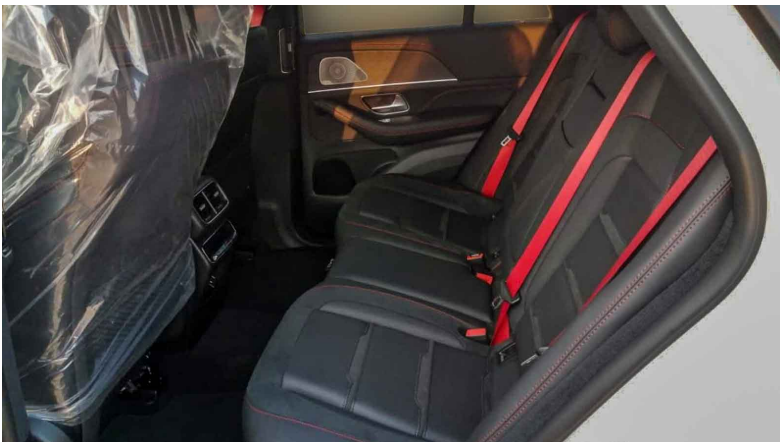
**Head office**  
P.O.Box : 6339  
AF - 07, Block A, Samari Retail  
Ras Al Khor 3, Dubai - UAE  
Tel: +971 50 4996459  
Mail: info@milelemotors.com




## (LHD) Mercedes Benz GLE 53 4MATIC+ MY2021 BLACK



-  /MileleMotors
-  @MileleMotors
-  MileleMotors
-  @MileleMotors




## (LHD) Mercedes Benz GLE 53 4MATIC+ MY2021 WHITE



-  /MileleMotors
-  @MileleMotors
-  MileleMotors
-  @MileleMotors

## (LHD) Mercedes Benz GLE 53 4MATIC+ MY2021



-  /MileleMotors
-  @MileleMotors
-  MileleMotors
-  @MileleMotors

## (LHD) Mercedes Benz GLE 53 4MATIC+ MY2021

