

(LHD) Toyota Hilux DC 4x4 2.4D MT Aerodrome

VEHICLE CODE: HILUX2.4D_10

BASIC INFORMATION

MODEL: HILUX 4WD D/C

MAKE: TOYOTA

GRADE: HILUX D/C 4WD DSL DLX-E

KATASHIKI: GUN125L-DTFLXV

BODY TYPE: PICKUP

DIMENSIONS

DIMENSIONS Lx W x H (mm): (5325) X 1800 X 1815

DECK DIMENSIONS Lx W x H (mm): 1520 X 1575 X 480

WHEELBASE (mm): 3085

GROUND CLEARANCE (mm): 310

KERB WEIGHT (Kgs): 2000-2090

GROSS VEHICLE WEIGHT (Kgs): 2910

FUEL TANK CAPACITY Litres : 80

TIRE

TIRE SIZE: 225 / 70 R17C ALL TERRAIN STEEL GENERAL SILVER

WHEEL CAP: CENTER ORNAMENT/STEEL SPARE TIRE

STEERING

POWER/TILT: WITH/WITH

BRAKE

FRONT/REAR: V.DISC/DRUM

SUSPENSION

FRONT: DOUBLE WISHBONE

REAR: LEAF SPRING



ENGINE & DRIVETRAIN

DISPLACEMENT cc: 2393

HP SAE (Net): 148

TORQUE Kg M SAE (Net): 40.8

TYPE: 4 CYL,16V, DOHC

FUEL SYSTEM: EFi W/ COMMON RAIL& INTERCOOLER (EURO4 W/OBD)

FUEL TYPE: DIESEL

CATALYTIC CONVERTER: WITH

T/M: 6-SPEED M/T

4WD OPTIONS: PART-TIME

DIFF. OPTION: WITHOUT

SAFETY

ABS + EBD + BA: WITH

AIR BAG: D+P

VSC+HILLSTART ASSIST CONTROL (HAC) + TRAILER SWAY CONTROL (TSC): WITH

DOWNHILL ASSIST (DAC)+LIMITED SLIP DIFFERENTIAL (LSD): WITHOUT

EXTERIOR

BUMPER

Fr. & Rr.: COLOUR KEYED / STEEL STEP CHROME

DOOR HANDLES: CHROME PLATED

MUD GUARDS

Fr. & Rr.: REAR *

HIGH MOUNT STOP LAMP: WITHOUT

OUTER MIRROR

COLOUR KEYED: CHROME PLATED

POWER: WITHOUT

SIDESTEP: WITHOUT

SIDE STRIPE *: WITHOUT

WINDSHIELD GLASS: GREEN LAMINATED W/TOP SHADE

ELECTRICAL

AC/HEATER: WITH/WITH

ANTENNA: SHORT POLE

AUDIO: CD, USB, AUX, BT, 2 SPK

POWER DOOR LOCK: WITHOUT

POWER WINDOW: WITHOUT

RADIO: AM/FM

WIPER FR: MIST

INTERIOR

CONSOLE BOX: SMALL CONSOLE BOX FOR BENCH SEATS

FR. SEAT

Fr. SEAT BELT: 3PELRx2 W/PT & FL + 2PNRx1

VERTICAL SEAT ADJUSTER: WITHOUT

RR. SEAT

Rr. SEAT BELT: 3PELRx2+2PNRx1

HEAD REST: WITH (2 No.)

CENTRE ARMREST: WITHOUT

DIGITAL CLOCK: WITH

INNER REAR VIEW MIRROR: DAY/NIGHT

SEAT MATERIAL: FABRIC

SEATING CAPACITY: 6

SUN VISOR: D(W/HOLDER) + P

TACHOMETER: WITH

OTHERS

LIGHT CONTROL SYSTEM: WITHOUT

ANTI-THEFT IMMOBILISER: WITH

BACK VIEW CAMERA: WITHOUT

BADGE*: DLX*

HEADLAMP: MULTI REFLECTOR HALOGEN

MUFFLER CUTTER*: WITHOUT

MULTI INFO DISPLAY: WITHOUT

RADIATOR GRILLE: CHROME + SILVER

REAR FOG LAMP: WITH

REAR WINDOW: SLIDE TYPE

SAFETY KIT *: WITH

SHIFT LEVER KNOB: URETHANE

STEERING WHEEL: URETHANE W/ CONTROL SWITCHES, SILVER

DECK TYPE: J'DECK WITH GUARD FRAME

TYRE PRESSURE MONITORING SYSTEM: WITH

PAINTED IN BLACK AND YELLOW

FOLLOW ME SIGN

VHF RADIO INSTALLED.

 @MileleMotors
 @MileleCorp
 @MileleMotors
 @MileleCorp
 @MileleCorp



Head office
P.O.Box 6339
AF - 07, Block A, Samari retail
Ras Al Khor3, Dubai - UAE
Tel: + 917504996459
Mail: info@milele.com



 @MileleMotors
 @MileleCorp
 @MileleMotors
 @MileleCorp
 @MileleCorp



Head office
P.O.Box 6339
AF - 07, Block A, Samari retail
Ras Al Khor3, Dubai - UAE
Tel: + 917504996459
Mail: info@milele.com



 @MileleMotors
 @MileleCorp
 @MileleMotors
 @MileleCorp
 @MileleCorp



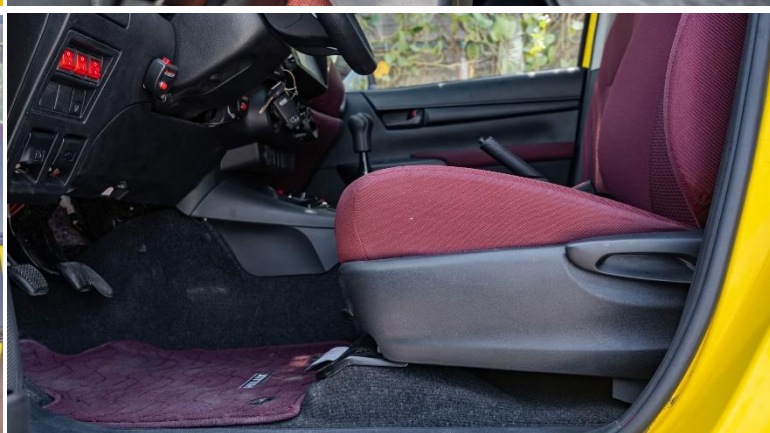
Head office
P.O.Box 6339
AF - 07, Block A, Samari retail
Ras Al Khor3, Dubai - UAE
Tel: + 917504996459
Mail: info@milele.com



 @MileleMotors
 @MileleCorp
 @MileleMotors
 @MileleCorp
 @MileleCorp



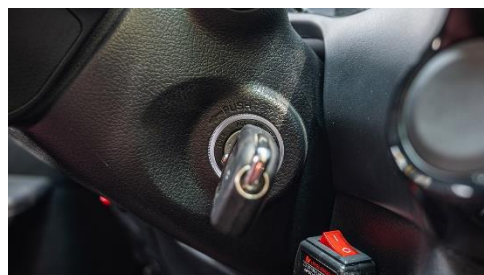
Head office
P.O.Box 6339
AF - 07, Block A, Samari retail
Ras Al Khor3, Dubai - UAE
Tel: + 917504996459
Mail: info@milele.com



 @MileleMotors
 @MileleCorp
 @MileleMotors
 @MileleCorp
 @MileleCorp



Head office
 P.O.Box 6339
 AF - 07, Block A, Samari retail
 Ras Al Khor3, Dubai - UAE
 Tel: + 917504996459
 Mail: info@milele.com



 @MileleMotors
 @MileleCorp
 @MileleMotors
 @MileleCorp
 @MileleCorp



Head office
P.O.Box 6339
AF - 07, Block A, Samari retail
Ras Al Khor3, Dubai - UAE
Tel: + 917504996459
Mail: info@milele.com

