

(LHD) TOYOTA LAND CRUISER 300 VX 4.0P AT MY2022 – BLACK

VARIANT: LC3004.0P_20

TECHNICAL FEATURES

TIRE BRAND	DUNLOP
FRONT CONSOLE BOX	MID (WATER TRANSFER)
DOOR TRIM	MID (WATER TRANSFER)
TIRE AND DISC WHEEL	265/65R18 (71/2J ALUMI) HIGH GLOSS
CRUISE CONTROL	NORMAL CRUISE CONTROL
EXHAUST EMISSION CONTROL	GASOLINE EURO2 (W/O OBD)
ENGINE	1GR-FE
CATALYTIC CONVERTER	(9R-08M+11R-08) X2 EURO2
ENGINE MONITOR WARNING	WITH
DIFFERENTIAL LOCK	RR: DIFFERENTIAL LOCK
VSC	ABS + BA + ATRC + VSC + TSC + DAC + CRAWL + TA
TOWING HITCH	PINTLE HOOK
ENGINE COOLANT	LLC 30%
LUGGAGE AND BACK DOOR	HATCH DOOR + PBD W/PRE-LOCK SW
AUTO AND EASY CLOSER DOOR	BACK DOOR
STEP AND STEP COVER	SIDE (ALUMITE)
ROCKER AND DOOR LOWER MOULDING	PAINTING
ROOF RACK	ROOF RAIL
WIND SHIELD WIPER CONTROL	VARIABLE INTERMITTENT WASHER + TIME ADJUSTMENT
HEATER	4 SEAT INDEPENDENT CONTROL (1LAYER BLOWER)
HEADLAMP	LOW: 2-BI, HIGHT: REF + SEQUENTIAL
KEY REMIND WARNING	WITH
WASHER FLUID LEVEL WARNING	WITH





HEADLAMP LEVELING	WITH (DINAMIC AUTO)
OUTSIDE REAR VIEW MIRROR	REMOTE + AUTO RETRACTABLE + ECM + HEATER + REVERSE (PLAT)
WIRELESS/SMART DOOR LOCK	SMART ENTRY + PUSH START (ALL DOOR) + PBD + PANIC
SUN VISOR	WITH (VANITY MIRROR + LED LIGHT + SLIDE)
PAINT PROTECTION FILM	WITH (WHOLE BODY SURFACE)
BACK MONITOR	BGM
FRONT HEADREST	FIXED
SEAT BACK POCKET	WITH (FR SEAT BACK)
AUDIO JACK	USB (1)
AIR CONDITIONER	AUTO (4 SEAT INDEPENDENT CONTROL)
SEAT MATERIAL	SYNTHETIC LEATHER
REAR NO.2 SEAT	5:5 FOR 2 PERSON RECLINING / MANUAL FOLD
INSIDE REAR-VIEW MIRROR	AUTOMATIC DAY & NIGHT
WIRELESS CHARGER	FR
WASHER FLUID	METHANOL FULL FILL
FLOOR CARPET AND MAT	NEEDLE PUNCH
WINDSHIELD WASHER	STD TYPE
EMISSION ID PLATE	DESTINATION EXCEPT JAPAN
EXPORT/DOMESTIC	EXPORT
ANTI-THEFT SYSTEM	IMMOBILIZER + SECURITY HORN
SUNROOF AND MOON ROOF	AUTO + JAM PROTECTION + REMOTE CONTROL
POWER DOOR LOCK	WITH + SPEED-LOCK + CRACKUP UNLOCK + P: W/LOCK
DOOR LOCK	D: ONE MOTION
SRS AIR BAG	D: SINGLE + P: DUAL, CSA: FR + RR1 + RR2, SIDE : FR
COOL AND HOT BOX	COOL BOX
FRONT SEAT	POWER SEPARATE SEAT
FRONT SEAT VERTICAL ADJUSTER	D + P: POWER
FRONT FOG AND DRIVING LAMP	LED
OWNERS MANUAL	ENGLISH
WHEEL ARCH MOULDING	STD (COLOR)
PACKAGE OPTION 4	MULTIMEDIA REGION (AFRICA RC5)
VEHICLE CATEGORY	GULF (MULTI PURPOSE)
BODY RUST PROTECTION	ACM14-4 OTHERS
BRAND NAME MARK	WITH
MODEL NAME MARK	LAND CRUISER
LIGHT CONTROL SYSTEM	WITH: 4P (GENERAL)
DAYTIME RUNNING LIGHT SYSTEM	WITH (LED) W/ CUT OFF-CONTROL
WATER TEMPERATURE GAUGE	WIDE
SPEED WARNING	WITH (LAMP + BUZZER)
LIGHT REMIND WARNING	WITH (BUZZER + AUTO CUT)
HEADLAMP CLEANER	WITH + W/ FIRST TIME LINK
DOOR OUTSIDE HANDLE	COLOR + PLATING
ANTENNA GLASS ANTENNA	(AM/FM)
FUEL TANK CAPACITY	GASOLINE + W/SUB TANK
STEERING WHEEL	LEATHER + IMITATION-WOOD
REAR SIDE GLASS	GREEN TEMPERED
REAR QUARTER GLASS	GREEN TEMPERED
REAR GLASS	GREEN TEMPERED
METER ILLUMINATION CONTROL	WITH (OPTITRON METER)
DOOR AJAR WARNING	WITH (ALL DOOR)

STEERING COLUMN
OVER-HEAD CONSOLE
AUDIO (OVERSEAS MARKET)
HEATER CONTROL PANEL
SUSPENSION
DOOR COURTESY LAMP
AIR CLEANER
WINDSHIELD GLASS
CHILD RESTRAINT SYSTEM
STEERING SWITCH
REAR PERSONAL LAMP
ACCESSORY CONNECTOR 2
ENGINE OIL LEVEL WARNING
ACCESSORY CONNECTOR
DOOR SCUFF PLATE
FIRE EXTINGUISHER
HORN
PARKING SUPPORT ALERT/BRAKE
WIRELESS DEVICE SUPPORT
LIGHT CONTROL SYSTEM
DAYTIME RUNNING LIGHT SYSTEM
WATER TEMPERATURE GAUGE
SPEED WARNING
LIGHT REMIND WARNING
HEADLAMP CLEANER
DOOR OUTSIDE HANDLE
ANTENNA
FUEL TANK CAPACITY
STEERING WHEEL
REAR SIDE GLASS
REAR QUARTER GLASS
REAR GLASS
STEERING COLUMN
OVER-HEAD CONSOLE
AUDIO (OVERSEAS MARKET)
HEATER CONTROL PANEL
MICROPHONE AND MIKE-AMPLIFIER
LIGHT CONTROL SYSTEM
DAYTIME RUNNING LIGHT SYSTEM
WATER TEMPERATURE GAUGE
SPEED WARNING
LIGHT REMIND WARNING
HEADLAMP CLEANER
DOOR OUTSIDE HANDLE
ANTENNA
FUEL TANK CAPACITY

TILT + TELESCO
WITH (W/ MOON ROOF)
DA + DVD + CD 6SP (7 INCHI)
AUTO (4ZONE) PLATING
FR=IFS RR=4LINK
70TH ANNIVERSARY LED FOR ACCESSORY
SQUARE FOR 1GR
GREEN W/TOP BAND + LAMINATED + HEAT SHIELD
WITH (W/ SEAT) X2
AUDIO + MID + TEL + VOICE + CC (PLATING)
LED
USB: FR (1) + RR1 (2) + RR2 (1)
ENGINE OIL LEVEL WARNING
FR: DC12 + RR: DC12 + DK: AC220
FR + RR (SUS)
INSTALLATION HOLE FOR ACCESSORY
REINFORCED (E-MARK, ZNR)
CSR (FR4 + RR4)
BLUETOOTH + WIFI
WITH: 4P (GENERAL)
WITH (LED) W/ CUT OFF-CONTROL
WIDE
WITH (LAMP + BUZZER)
WITH (BUZZER + AUTO CUT)
WITH + W/ FIRST TIME LINK
COLOR + PLATING
GLASS ANTENNA (AM/FM)
GASOLINE + W/SUB TANK
LEATHER + IMITATION-WOOD
GREEN TEMPERED
GREEN TEMPERED
GREEN TEMPERED
TILT + TELESCO
WITH (W/ MOON ROOF)
DA + DVD + CD 6SP (7 INCHI)
AUTO (4ZONE) PLATING
WITH
WITH: 4P (GENERAL)
WITH (LED) W/ CUT OFF-CONTROL
WIDE
WITH (LAMP + BUZZER)
WITH (BUZZER + AUTO CUT)
WITH + W/ FIRST TIME LINK
COLOR + PLATING
GLASS ANTENNA (AM/FM)
GASOLINE + W/SUB TANK

STEERING WHEEL	LEATHER + IMITATION-WOOD
REAR SIDE GLASS	GREEN TEMPERED
REAR QUARTER GLASS	GREEN TEMPERED
REAR GLASS	GREEN TEMPERED
STEERING COLUMN	TILT + TELESCO
OVER-HEAD CONSOLE	WITH (W/ MOON ROOF)
AUDIO(OVERSEAS MARKET)	DA + DVD + CD 6SP (7 INCHI)
HEATER CONTROL PANEL	AUTO (4ZONE) PLATING
MICROPHONE AND MIKE-AMPLIFIER	WITHI
PACKAGE OPTION 6	70TH ANNIVERSARY BADGE FOR ACCESSORY
ILLUMINATED ENTRY SYSTEM	IG SW LIGHT + ROOM LAMP + LOUNGE + INSIDE HANDLE + FR FOOT)
ROOM LAMP	FR + RR1 + RR2: LED
SEAT BELT WARNING	D+P (LAMP + BUZZER) 2-STEP
MUD GUARDS	STD
GRADE MARK	VX
REGULATION COMPLIANCE LABEL	GENERAL LABEL
RADIATOR GRILLE	SILVER PAINTING + PLATING (VX, ZX)
REAR BUMPER	COLOR + PINTLE HOOK
FRONT BUMPER	COLOR
E/G UNDER COVER AND PROTECTOR	HD
TCD ACCESSORY 1	WITH (TOYOTA)
ANTI-THEFT	HEAVY PACK
FIRE EXTINGUISHER	WITH, INSTALL (B-TYPE)
TRIANGLE CAUTION PLATE	1PCS LOADED (TOYOTA)
DOOR CTY LAMP	DOOR COURTESY LAMP LOGO ILLUMINATION PLUS FOR 70TH
EMBLEM	70TH EMBLEM
FLOOR MAT	LHD FR+RR1,2 (BLACK) (+241DA/JA) FOR 70TH
TOOL (FACTORY INSTALLATION)	STD SET (FOREGN) + PLUG WRENCH
FUEL CAUTION LABEL	ENGLISH (PETROL REGULAR)
REFRIGERANT CORRESPONDENCE	HFC134A
SEVERE USAGE PACKAGE	HEAVY DUTY + HARD PROTECTOR
CRANK PULLEY DAMPER	1STEP
ENGINE MOUNTING	CONVENTION
RADIATOR	716*565*34(1GR)
ENGINE OIL COOLER	1GR-FE
FAN AND COUPLING	470X2000CST
THERMOSTAT	82C
FRONT EXHAUST PIPE	1GR-FE
MUFFLER	MAIN 32.6L + SUB 11.3L (1GR)
IGNITION SYSTEM	S-TDI
ACCELERATOR PEDAL	PENDANT W/O KICK DOWN SW
OVER-RUN AND SPEED LIMITER	190KM/H
EXHAUST EMISSION SENSOR	O2 X2 + A/F X2
FUEL PUMP	FUEL PUMP CONTROLLER
FUEL FILTER	FOR GASOLINE
FUEL INLET	DOUBLE TANK (WITH I/F)
FUEL CAP	WITH (W/ TETHER)

EVAPORATIVE SYSTEM	STD
FUEL CUT SYSTEM	WITH
TRANSMISSION	6A/T AC60F ECT-POWER/2ND
TRANSMISSION OIL COOLER	WATER COOLED
TRANSFER AND CENTER DIFF	FULL TIME (TORSSEN LSD)
SHIFT LEVER AND KNOB	LEATHER SEQUENTIAL (S-MODE)
A/T SHIFT LOCK SYSTEM	WITH (ELECTRICAL)
FRONT DIFFERENTIAL	SD22A I=4.3
REAR DIFFERENTIAL	BD24A I=4.3
POWER STEERING	HPS
FRONT WHEEL BRAKE	17-INCHI DISC
REAR WHEEL BRAKE	17-INCHI DISC
PARKING BRAKE	EPB (MOC W/BRAKE HOLD)
BRAKE M/CYLINDER AND BOOSTER	AHB-RX
HILL STARTING ASSIST SYSTEM	WITH
BRAKE PEDAL	PENDANT
WHEEL CAP	ALUMI
SPARE WHEEL CARRIER	UNDER
FRONT SIDE GLASS	GREEN + HEAT SHIELD
REAR WINDOW DEFOGGER	WITH
FENDER LINER	FR (W/INSULATOR) + RR
FLOOR SILENCER	W/RR HEATER DUCT
HOOD SILENCER	WITH (LOW)
DASH SILENCER	LOW
WEATHER STRIP	FR+RR DOUBLE STICKER
TOWING HOOK	FR: RH1 , RR1
REAR SPOILER	WITH
DOOR WINDOW FRAME MOULDING	SUS
DOOR BELT MOULDING	SUS
LWR BACK AND BACK DOOR GARNISH	WITH (COLOR)
CHILD PROTECTOR	WITH (RR DOOR)
DOOR INSIDE HANDLE	PLATING
POWER WINDOW	ALL DOOR ONE-TOUCH U/D + AUTO JAMPRO + REMOTE + SW
PLATING	
FUEL LID OPENER	NORMAL
KEY PLATE	SMART ENTRY SYSTEM
REAR WINDOW WIPER	WITH (INTERMITTEN + WASHER CONTROL)
WIPER BLADE	STD TYPE
WASHER TANK	FR + RR + HEAD LAMP CLEANER
GLOVE BOX LAMP	WITH
FRONT PERSONAL LAMP	WITH (LED)
LUGGAGE ROOM LAMP	WITH (LED)
HEADLAMP AIMING	RH AIMING (FOR LHD CAR)
CLEARANCE LAMP	LED (W/DAYTIME RUNNING LIGHT SYSTEM) + WELCOME LIGHT
REAR COMBINATION LAMP	ALL (LED)
LICENSE PLATE LAMP	BACK DOOR CENTER
BACK UP LAMP	LED

HIGH MOUNT STOP LAMP	WITH
SIDE TURN SIGNAL LAMP	SIDE TURN (W/ OUTER MIRROR)
EMERGENCY STOP SIGNAL	WITH (HAZARD LAMP)
ROOF HEAD LINING	FABRIC
ASSIST GRIP	RETRAKCTABLE (FR, 2ND, 3RD)
COAT HOOK	WITH (2)
FRONT PILLAR GARNISH	FABRIC
PILLAR/CENTER PILLAR GARNISH	FABRIC
SPEAKER GRILLE	PREMIUM
QUARTER PILLAR.	GARNISH RESIN
REAR PILLAR GARNISH	RESIN
FOOTREST	WITH
CUP HOLDER	FR (2) + 2ND (2) + 3RD (4)
DOOR POCKET	FR + RR
LUGGAGE HOLDING BELT	W/O CARGO HOOK
INSTRUMENT PANEL	FOR HIGH GRADE
INSTRUMENT PANEL CENTR CLUSTER	PLATING
INSTRUMENT PANEL UNDER COVER	D + P
GLOVE BOX	LID SYNTHETIC LEATHER
REAR CONSOLE BOX	SYNTHETIC LEATHER
REAR HEATER DUCT	RR NO1 + RR NO2 + DEF
REAR HEATER CONTROL PANEL	WITH (4ZONE) PLATING
CLEAN AIR FILTER	WITH (NEW POLLEN FILTER)
CONDENSER FAN	WITH
COOLER REAR DUCT	WITH (SENER CONSOLE) + ROOF (RR NO1 + RR NO2)
REAR NO.1 SEAT	BACK 4: 2: 4
REAR HEADREST	RR NO1: (3) + RR NO2: (2)
REAR ARM REST	WITH (RR NO1)
FRONT SEAT SLIDE	D: 260MM, P: 240MM
SEAT LUMBER SUPPORT	D: POWER
FRONT SEAT BELT	ELR3-3 (PRETEN + 1 F/L)
REAR NO.1 SEAT BELT	ELR3-3-3 (OUTER ADJUST)
REAR NO.2 SEAT BELT	ELR 3-3
KNEE PANEL	D +P + KNEE A/B
OCCUPANT CLASSIFICATION SENSOR	P SEAT
VOLTAGE	12V
BATTERY	SINGLE (LN3)
ALTERNATOR	SC2 150A
STARTER	RA1.4
STARTER HOLDING CONTROL	WITH
STARTING SYSTEM	PUSH START
COMBINATION SWITCH	RH: WIPER, LH : LIGHT
SPEED METER	OPTITRON 260KM/H (7 IN TFT MID)
ECONOMY METER	WITH (LAMP + ZONE)
OIL PRESSURE METER	WITH (METER)
CLOCK	DIGITAL (ON METER)
MULTI INFORMATION DISPLAY	WITH (ON METER)




Milele
Automotive, Mobility, and Beyond

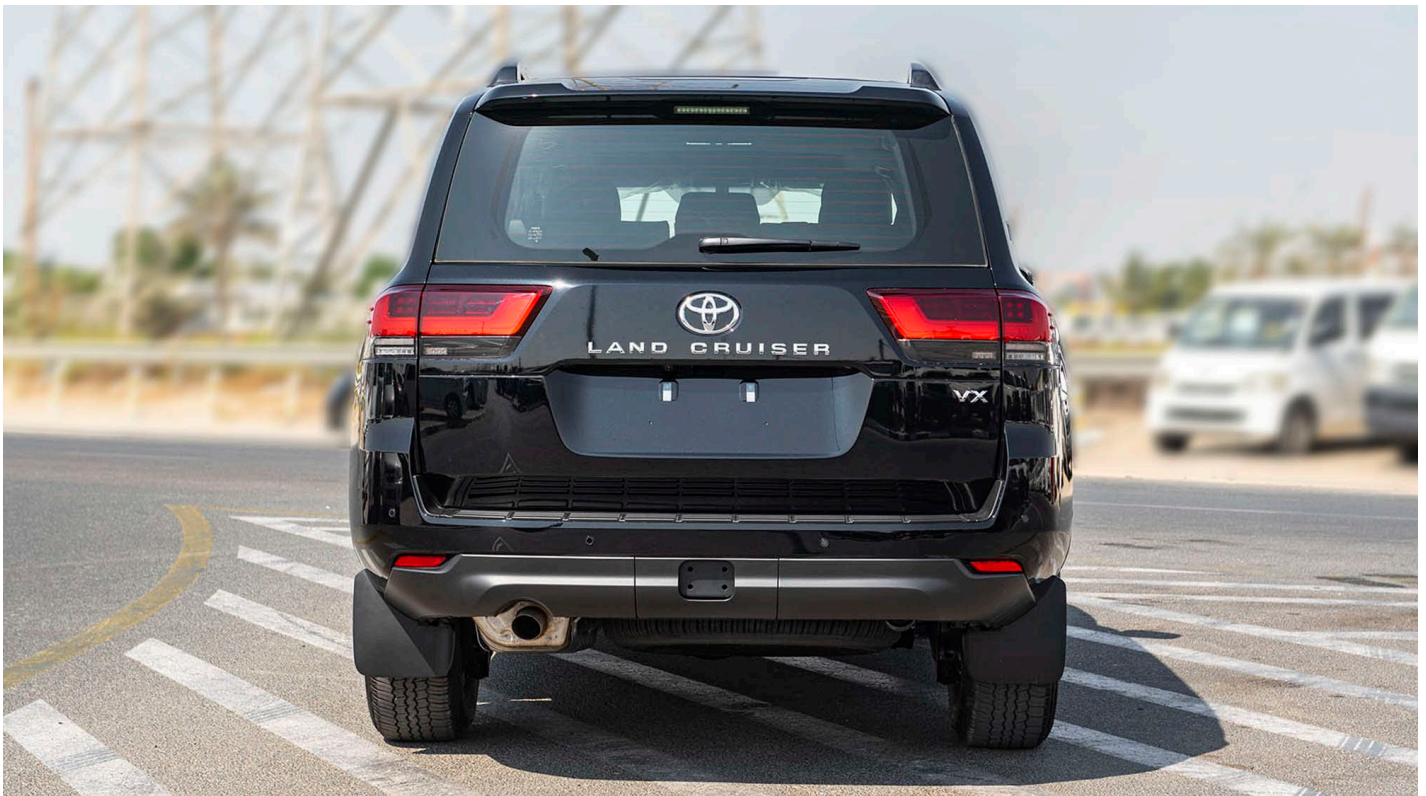
Ras Al Khor3, Dubai - UAE 

P.O Box 6339 

+971504996459 

info@milele.com 

www.milele.com 



www.milele.com




[Click Here](#)



Milele
Automotive, Mobility, and Beyond

Ras Al Khor3, Dubai - UAE 

P.O Box 6339 

+971504996459 

info@milele.com 

www.milele.com 



www.milele.com




Click Here



Milele
Automotive, Mobility, and Beyond

Ras Al Khor3, Dubai - UAE 

P.O Box 6339 

+971504996459 

info@milele.com 

www.milele.com 



www.milele.com




[Click Here](#)



Milele
Automotive, Mobility, and Beyond

Ras Al Khor3, Dubai - UAE 

P.O Box 6339 

+971504996459 

info@milele.com 

www.milele.com 



www.milele.com



[Click Here](#)