

## (LHD) MERCEDES BENZ GLS450 SUV 3.0P HEV AT 4MATIC MY2023 - OBSIDIAN BLACK

VEHICLE CODE: GLS3.0PH\_5  
TECHNICAL FEATURES

### Engine

No. of Cylinders: 6  
Displacement: 3000  
Power: 362hp @ 5500rpm  
Torque: 610Nm  
Fuel Type: Mild Hybrid Petrol

### Transmission

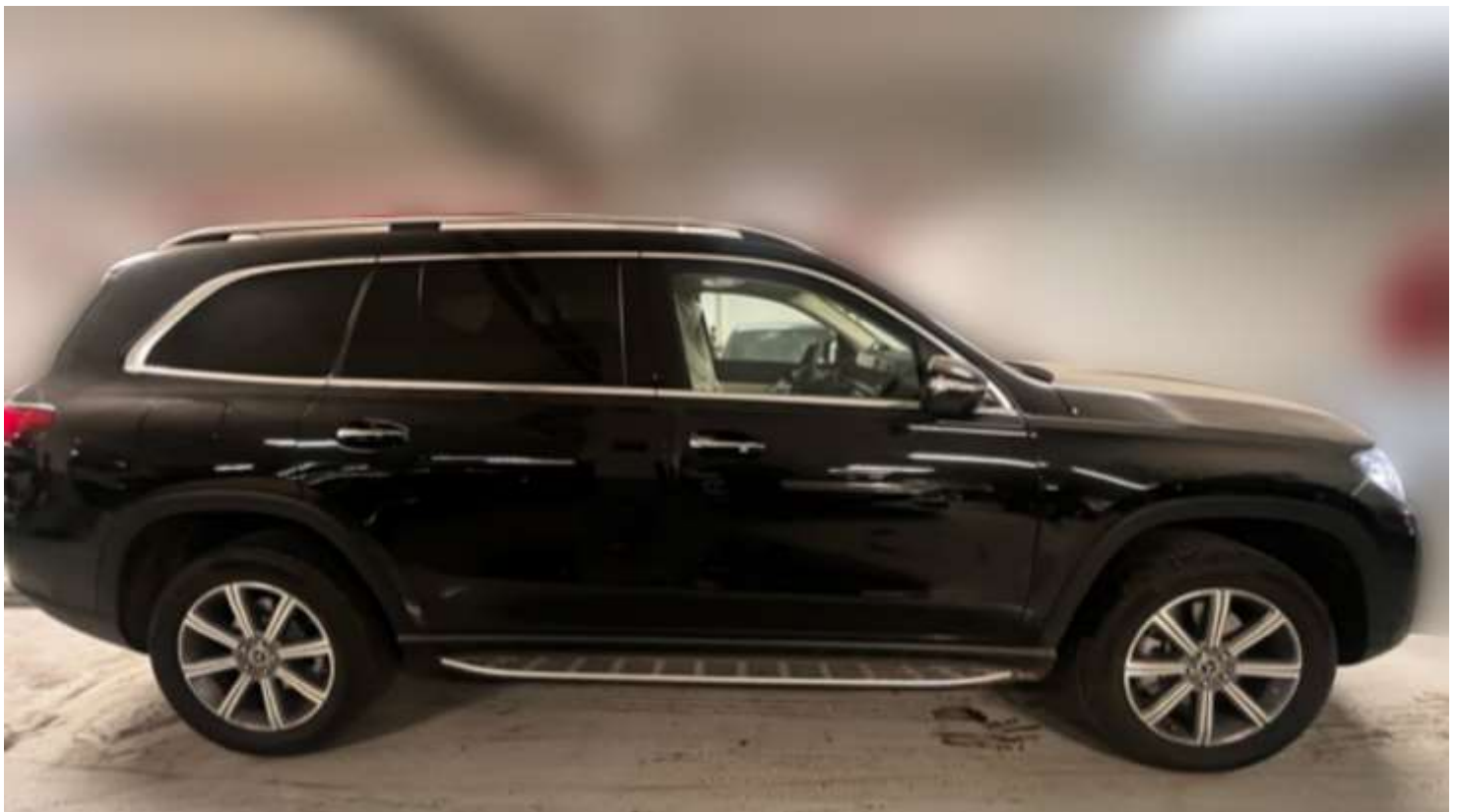
Drive: All Wheel Drive  
Transmission type: Automatic  
No. of Gears: 9-speed

### Fuel Efficiency

Tank Size: 90L  
Fuel Consumption: 8.5kmpl

### Wheels & Rims

Front: P275/50R20  
Rear: P275/50R20



## Dimensions

Length:	5219 mm
Width:	2030 mm
Wheelbase:	3135 mm
Height:	1823 mm
Ground clearance unladen:	199 mm
Weight:	2656kgs

## Standard features

Owner's Manual and service information - English  
Smartphone integration  
Apple CarPlay  
Android Auto  
Suspension with adaptive damping system  
5+2-seater  
Blind Spot Assist  
GPS aerial  
Exit warning function  
Extended MBUX functions  
Hard-disc navigation  
Sliding sunroof  
9G-TRONIC  
Steering wheel heating  
Tyre pressure loss warning system  
Underguard  
AIRMATIC Package  
Media Interface cable kit  
MBUX multimedia system  
Roof liner in macchiato beige fabric  
THERMATIC automatic climate control  
Adaptive Highbeam Assist Plus  
MULTIBEAM LED  
Freight packaging with tie-down hooks  
Model year on model plate  
Emergency spare wheel  
EASY-PACK load compartment cover  
Additional USB ports  
Burmester® surround sound system  
Control code for Sales  
Heat-insulating dark-tinted glass  
3rd seat row  
Aluminium-look, illuminated running boards with rubber studs  
Widescreen cockpit  
Heated rear seats

Heated front seats  
Ambient lighting  
Power closing  
EASY-PACK tailgate  
Interior Chrome Package  
Fuel tank with a capacity of 90 litres  
EU6 emissions standard  
Integrated Starter Generator Generation 1  
50.8 cm (20-inch) 8-spoke light-alloy wheels  
Identification label under windshield  
Mild Hybrid Antrieb  
Fanfare horn Asia  
Tyre-change toolkit  
Vehicle key in high-gloss black with ornamental surround in high-gloss chrome  
High-gloss anthracite lime wood trim  
Deactivation of blue ambient lighting  
Multifunction sports steering wheel in nappa leather  
KEYLESS-GO Comfort Package  
HANDS-FREE ACCESS  
KEYLESS-GO  
Parking Package with 360-degree camera  
Active Parking Assist with PARKTRONIC  
360° camera  
Mirror Package  
interior mirror and driver's exterior mirror automatically dimming  
Electrically folding exterior mirrors  
Ambient lighting with projection of brand logo  
Memory Package  
Power front right seat with memory function  
Driver's seat, electrically adjustable with memory function  
Summer tyres  
Dashboard and door beltlines in ARTICO man-made leather  
Automatic front passenger airbag deactivation  
Velour floor mats  
4-way lumbar support



**Milele**  
Automotive, Mobility, and Beyond

Ras Al Khor3, Dubai - UAE

P.O Box 6339

+971504996459

info@milele.com

[www.milele.com](http://www.milele.com)



[www.milele.com](http://www.milele.com)







**Milele**  
Automotive, Mobility, and Beyond

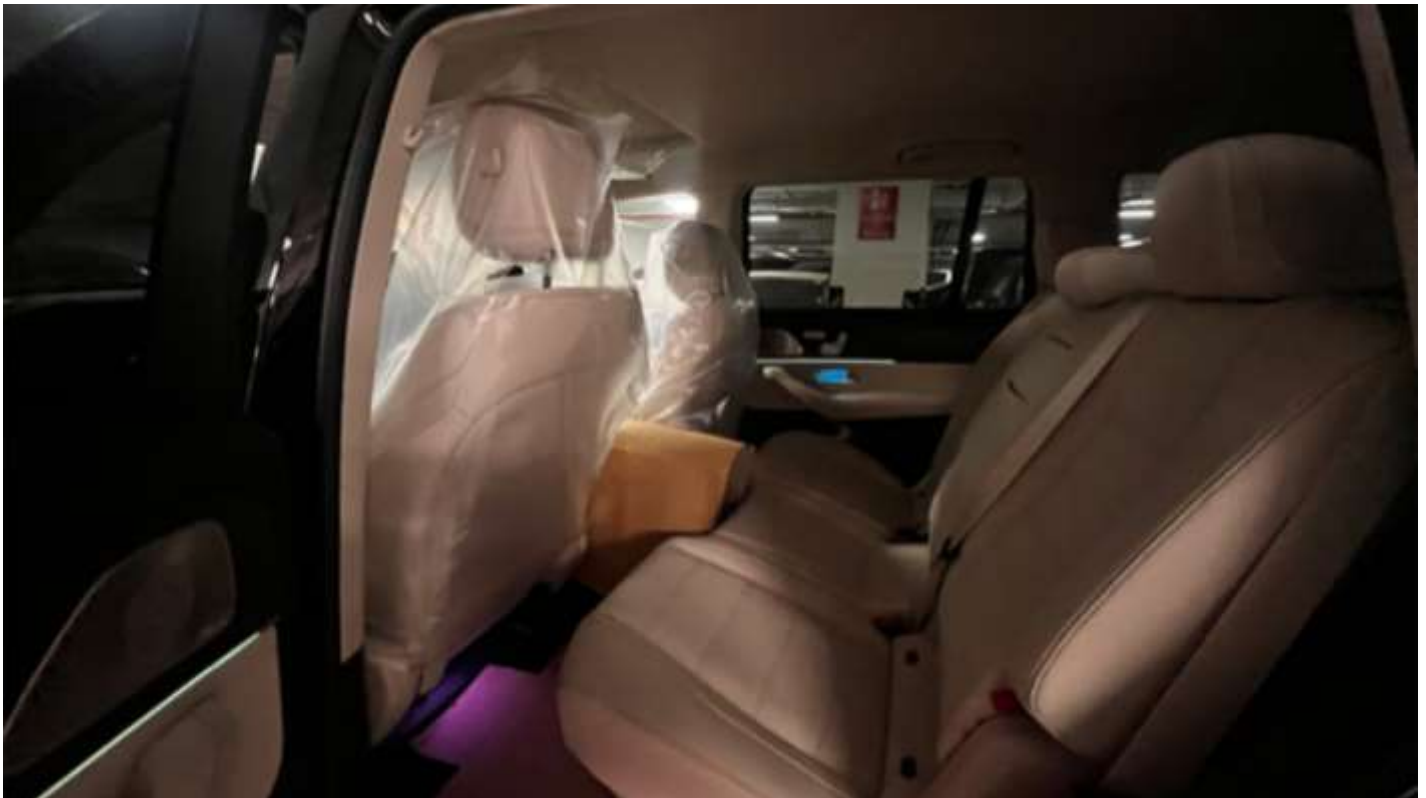
Ras Al Khor3, Dubai - UAE

P.O Box 6339

+971504996459

info@milele.com

[www.milele.com](http://www.milele.com)



[www.milele.com](http://www.milele.com)

